



# THE CORRIDOR

International Right of Way Association  
Garden State Chapter 15 Issue No. 2 April 2007  
Website: [WWW.IRWANJ.ORG](http://WWW.IRWANJ.ORG)

## EXECUTIVE BOARD 2007

**Lorraine Gorman,**  
SR/WA President

**Stephanie Rankin,**  
SR/WA  
Vice President

**Robert RaVell**  
Secretary

**Walter Scharfenberg,**  
SR/WA  
Treasurer

**Kristina Hofmann**  
Director & Membership

**Dave Kook**  
Director & Newsletter Editor

**William (Bill) Perry**  
Professional Development

**Robert RaVell**  
Professional Development

**Linda Beyer**  
Arrangements

## PRESIDENT'S MESSAGE:

First of all, I want to extend the Chapter's THANKS to Daniel Pacheco for a fantastic presentation on Relocation at our January meeting. The project he completed in New York within a short period of time was remarkable; however, Daniel's expertise in Relocation was further exhibited when he successfully moved the entire group to an alternate room in the restaurant where he set up a make-shift theatre (in record-breaking time) around his PC when the LCD projector we supplied would not cooperate.

Hopefully, you've already SAVED THE DATE of Wednesday, April 11<sup>th</sup> for our next Chapter meeting. It has been a while since we have had a "field visit" associated with a meeting. In the past, these types of meetings were very well attended. We're hoping the same will hold true for this meeting. Location is easy to get to, talk should be very informative, restaurant is great, and I'm banking on the weather being perfect. ...How many more reasons do you need to schedule an afternoon out of the office?

At our January meeting, I mentioned that I would be sending out questionnaires to all members so that a Chapter Directory could be compiled. In order for the directory to be of value, 100% participation is required – so please take a few minutes to complete and return the Member Information Form that will be e-mailed to you within the next week or so.

I'm going to be optimistic and say I'll see you at the Route 29 tunnel in a couple of weeks....Don't forget to RSVP to Linda Beyer.....

Lorraine

NEXT MEETING April 11, 2007 [http://www.irwanj.org/April\\_2007\\_Lunch.pdf](http://www.irwanj.org/April_2007_Lunch.pdf)

**REGION 4 NEWS** Check out the Region 4 Newsletter  
[http://www.irwanj.org/Region\\_4\\_Newsletter-Spring\\_07.doc](http://www.irwanj.org/Region_4_Newsletter-Spring_07.doc)

#### SPRING FORUM

Reminder: The Spring Forum will be held in Williamsburg, VA. April 17<sup>th</sup> – April 21<sup>st</sup>.  
The courses available include Course 213 (Conflict Management) and the SR/WA study session and exam.

Plan to stick around after the meeting on Sat. for a historic tour of Jamestown and other sights. Please forward this e-mail with the attachments to your Chapter membership.

Forum Registration [http://www.irwanj.org/Chapter\\_52\\_Forum\\_Registration\\_Form.doc](http://www.irwanj.org/Chapter_52_Forum_Registration_Form.doc)

Forum Flyer [http://www.irwanj.org/2007\\_Spring\\_Forum\\_Flyer.pdf](http://www.irwanj.org/2007_Spring_Forum_Flyer.pdf)

Course Registration [http://www.irwanj.org/Chapter\\_52\\_Course\\_Registration\\_Form.doc](http://www.irwanj.org/Chapter_52_Course_Registration_Form.doc)

Corporate Sponsorship [http://www.irwanj.org/Chapter\\_52\\_Forum\\_Corporate\\_Sponsor\\_Certificate.doc](http://www.irwanj.org/Chapter_52_Forum_Corporate_Sponsor_Certificate.doc)

#### New Members

Lynne DelTosto is a Sr. Conveyancer doing Title Closings with Public Service Electric & Gas

Patricia Leech is an Assistant Transportation. Planner, Federal Highway Administration

Bob Ryan works at KS Engineers, P.C. in Newark. He is VP of Surveying Services.

Diane Snyder is a Right of Way Supervisor/Agent with Wilbanks Land Services

**Call for Articles** Do you have an opinion? Is something new and different happening in your area of specialization? Do you feel an urge to share a better way to get the job done? Is anyone out there still breathing????

If you answered yes to any of these, you could be a contributor. You don't have to submit a full blown article, even an idea would be a great help in making this newsletter better. If you would like to contribute to the newsletter, [click here](#).

#### Educational Opportunities

The Executive Board has decided to move forward with scheduling an IRWA Course. We have reserved September 10 and 11 at the Atlantic County Training Center, and are currently researching if any "local" instructors would be available to present a "200" Series Course. More info to follow.

If anyone is interested in an IRWA course, please let Bill Perry, our education coordinator know. ([bill.perry@williams.com](mailto:bill.perry@williams.com)).

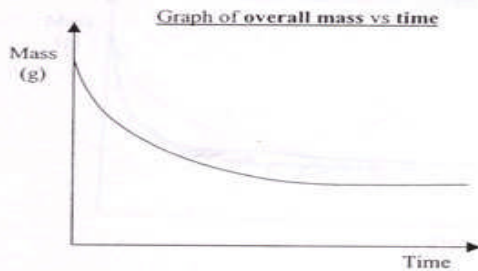
To see what courses IRWA has to offer, visit <https://www.irwaonline.org/eweb/startpage.aspx> where you keep current on courses and find the Principles of Right of Way Textbook online for FREE. To suggest a course for our Chapter, use our [feedback and questions link](#)

#### 2007 Annual Education Seminar

The 53rd Annual Education Conference is slated for Sacramento, California, June 17-20, 2007. Visit the website for additional details.

<https://www.irwaonline.org/eweb/DynamicPage.aspx?Site=IRWA071306&WebKey=bafb2f19-d334-49d5-a19d-1b249056d642>

Remember when Math was new and exciting. Here is a chance to relive those moments again.



1. Explain the shape of the graph.

Its curvy, with a higher bit at the end and a rather aesthetically pleasing slope downwards towards a pretty flat straight bit. The actual graph itself consists of 2 straight lines meeting at the lower left hand corner of the graph and moving away at a 90° angle. Each line has an arrow head on the end.

PETER 1.21

Expand

$$(a+b)^n$$

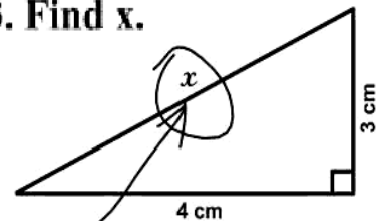
$$= (a + b)^n$$

$$= (a + b)^n$$

$$= (a + b)^n$$

etc -

3. Find x.



Here it is

2. A 3-kg object is released from rest at a height of 5m on a curved frictionless ramp. At the foot of the ramp is a spring of force constant  $k = 100 \text{ N/m}$ . The object slides down the ramp and into the spring, compressing it a distance  $x$  before coming to rest.

- 10 (a) Find  $x$ .
- 5 (b) Does the object continue to move after it comes to rest? If yes, how high will it go up the slope before it comes to rest?

5 m

3 kg

$k = 100 \text{ N/m}$

$x$  (m)

$U = 3(9.81)(5) = 147.15$

$U_s = \frac{1}{2}(100)x^2 = 50x^2 \dots?$

NO. there is an elephant in the way.

$$c = a + b + d$$

$$c = (\pi \cdot 8 \cdot (2-10)^2 + 3\alpha + 2 \cdot 3 \ln 11)^2$$

$$c = (\pi \cdot 8 \cdot \log \frac{1}{2+2} + 3\alpha + 6 \ln 11)^2$$

$$c = \left[ \int_{x_1}^{x_2} \sum_{i=1}^n \alpha dx + \frac{3[(3+7x)^2 + 6 \cdot 3\pi]}{(5+y)(8+2)+1} + 6 \ln 11 \right]^2$$

$$c = \left[ \int_{x_1}^{x_2} \sum_{i=1}^{20} \frac{(3+7x)^2 + 6 \cdot 3\pi}{(5+y)(8+2)+1} dx + \frac{3[(3+7x)^2 + 6 \cdot 3\pi]}{(5+y)(8+2)+1} + 6 \ln 11 \right]^2$$

$$c = \left[ \int_{x_1}^{x_2} \sum_{i=1}^{20} \frac{(3+7x)^2 + (\beta-180^2)+3\pi}{(5+y)(8+2)+1} dx + \frac{3[(3+7x)^2 + (\beta-180^2)+3\pi]}{(5+y)(8+2)+1} + 6 \ln 11 \right]^2$$

$$c = \left[ \int_{x_1}^{x_2} \sum_{i=1}^{20} \frac{\sqrt{3+7x + (\beta-180^2)+3\pi}}{\frac{(5+y)(8+2) + \log 8}{10\Omega-6\pi-1}} dx + \frac{3[\sqrt{3+7x + (\beta-180^2)+3\pi}]}{\frac{(5+y)(8+2) + \log 8}{10\Omega-6\pi-1}} + 6 \ln 11 \right]^2$$

$$c = \sqrt{\left[ \int_{x_1}^{x_2} \sum_{i=1}^{20} \alpha dx + \frac{3[\sqrt{3+7x + (\beta-180^2)+3\pi}]}{\frac{(5+y)(8+2) + \log 8}{10\Omega-6\pi-1}} + 6 \ln 11 \right]^2}$$

$$c = \sqrt{\left[ \int_{x_1}^{x_2} \sum_{i=1}^{20} \alpha dx + \frac{3[\sqrt{3+7x + (\beta-180^2)+3\pi}]}{\frac{(5+y)(8+2) + \log 8}{10\Omega-6\pi-1}} + 6 \ln 11 \right]^2}$$

